

PICTOR[®]

MINI 4G 2K DASH CAM

User Manual



Part one:Item construction

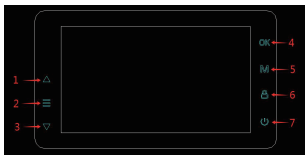


P83



P85

Part two: Key introduction



- ① UP button ② MENU button ③ DOWN button ④ OK button
 ⑤ MODE button ⑥ LOCK button ⑦ POWER button

1.UP button

This is for the turn up to the last setting and parameter when we set the parameter.

2.MENU button

When the screen is light on, we short press it, will get the video play back interface, short press it again, we will back to the home page.

3.DOWN button

It is used to turn down to next choice when we set the parameter or playback the video files in the TF card, or set the language ...

4.OK button

It is used to confirm the parameter setting.

5.MODE button

Function 1: after we set the parameter, short press it, will back to the home page.

Function 2: when in home page, short press it to get the record page, short press again to get playback video interface, short press it next back to the home page finally.

6.LOCK button

Under the recording mode, short press it will lock one clip video (at the same time we will hear one voice saying will record short video, we short press it again, the voice will say the short video record finish, then we will get one locked video files in the tf card)

7.POWER button

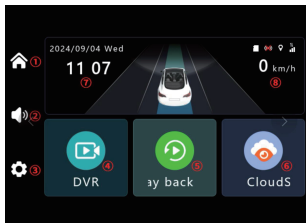
Function 1: screen save function

When screen is light, short press it to save the screen(now the recording will continue)
short press it again, will light on the screen.

Function 2: set the factory default setting

When dash cam is working, long press this key for 2s, we will hear one voice saying "recording stop, the dash cam will reboot" , then after 2-3s, the dash cam will reboot automatically.

Part three: Main UI introduction



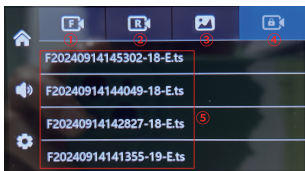
- ① home page
- ② volume adjust
- ③ setting
- ④ recording mode
- ⑤ video play back mode
- ⑥ free app CloudSpirit
- ⑦ date and time
- ⑧ speed

When we enter into the recording mode, the main interface as below:



- ①home page
- ②increase or low the volume
- ③playback the video
- ④stop record
- ⑤take photo
- ⑥lock the video
- ⑦audio recording
- ⑧switch the back cam and front cam image
- ⑨it show the date, time and video quality,lens quantity...

Below is the video playback list:



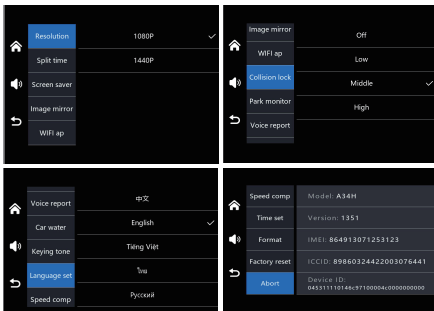
- ①Vido files from front camera
- ②Video files from the back camera
- ③Picture or photo saved in the card.
- ④Locked video files
- ⑤Video files list

When we choose one video file and short press "ok" button to play it, will see ts interface as this one:



- ①back the last page ②last file ③fast forward
④stop ⑤back ⑥next file ⑦delete

Its setting choice all are here:



Part four: Function introduction

Function 1: auto record

When we insert the TF card, once give power to the dash cam, it will begin to record automatically.

Function 2: g-sensor, loop recording

G-sensor will lock the important video files and make sure it will not be covered by the loop record, loop record mean when TF card it full, this function will cover the previous the file to continue recording.

Function 3: parking monitor

Use the convert adapter, and when ACC off, the dash cam will guard your car all the time.

When there is the collision with your car, the dash cam will begin to record, this file will last 20s, then saved in the TF card with locked icon.

Function 4: time lapse record

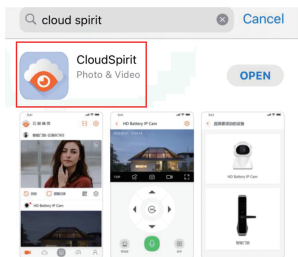
We need to use one special convert hardwire kit for this function. It can make the video files smaller, so that the same capacity TF card can record more time.

Function 5: remote monitor function

We use the free app "CloudSpirit" to monitor the vehicle remotely when we close the car engine.

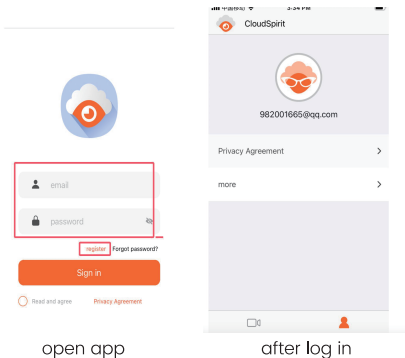
1st: how do we download this app

We can search it in the google store or app store, then download. It can fit the android phone and iOS phone.



When we open this app, it is like this, we need to register it with one email, then log in.

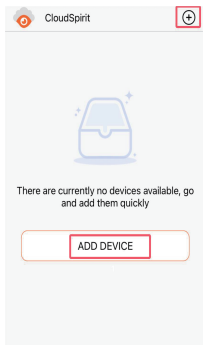
Once log in and click the "👤" it will ask you to add devices.



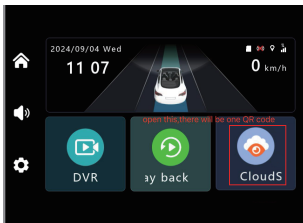
2nd how to connect to the wifi hot spot from this dash cam;

The wifi hot spot name is A34H_*****, password is 12345678
Use your phone find this name and connect, thus in the near dash cam, we can check the live video from the front, back cam on dash cam, also can check the video files in the TF card.

3rd: how to bind our phone with this free app

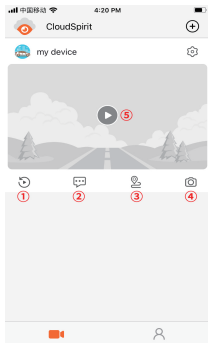


We use the “add device” or the “+” on the top right corner to bind the device with your phone. After bind, we can check the live video, click on the image, switch the video from front and back cam. We need to to scan the QR code from the cloud spirit app from the dash cam home page from below picture:



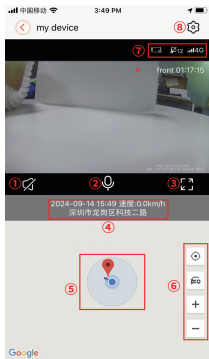
This app is in the home page, after we open it, there will be one QR code(we click the “add device” or “+” need to scan this code to bind them.)

When we click the “” get the UI as above picture:



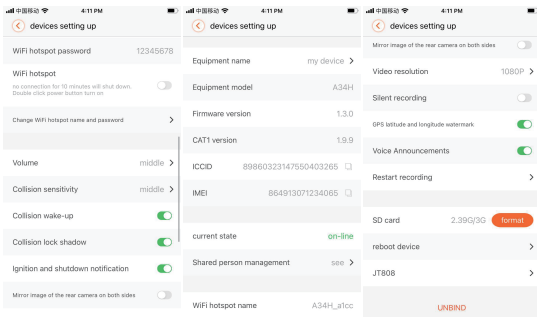
- ① playback the video files in the TF card
- ② check the alert message
- ③ check the gps tracking
- ④ capture the picture
- ⑤ click this to enter into the monitor interface as below

below is the monitor interface:



in the monitor interface:

- ① audio record
- ② two ways talk
- ③ check image in full screen
- ④ show the time date and address
- ⑤ gps position
- ⑥ enlarge the map
- ⑦ show the gps, 4g signal status
- ⑧ setting for the dash via app (when we click this part and get one interface as below)



Part five: Install guide

1. Close the car engine.
2. Insert the TF card into dash cam.
Please use the TF card with class 10 or above.
3. Install the dash cam in the car front windshield with the install bracket.
4. Connect the red wire to the ACC, yellow wire to constant power, black wire to ground.
5. Connect the power cable and dash cam.
6. Insert the rear camera, and please note the camera direction when install it.
7. Adjust the back cam make sure it will be parallel with the ground.
8. Start the car engine to check whether the dash cam can switch on.

Note: when you first use it, please format the TF card in the dash cam.

Part six: Specification

Chip	Allwinner v83	
Memory	ROM	512MB
	RAM	128MB
GPS position	Beidou+ external GPS antenna	
Display screen	3inch ips (display resolution is 640x360p)	
Operation system	Linux	
Software upgrade	support upgrade via the tf or ota	
WiFi	802.11b/g/n 2.4GHz; support wifi hot spot	
Remote monitor	check live video, capture the video or picture..	
GPS track check playback	support	
Check video files in tf card	support, also can download to your phone	
4G network band	FDD LTE B1/B3/B5/B8/B38/B39/B40/B41	

G-sensor	3 axis G-sensor sensor, support loop recording
Parking monitor	Support
Front camera	2K@25fps, view angle is 140 degree
rear camera	AHD720P(1280*720)@25fps view angle is 130 degree
Video compress	H.264
Video format	TS
Max micro card support	fit max 512g micro sd card with class 10 or above
Microphone	Built-in
Loud speaker	Built-in
Button	7 key
Reset key	support
Power input	DC5V, Type-C port, can fit the 12-24v power input
ACC	Support
Working temperature	-20 C ~ +70 C
Storage temperature	-30 C ~ +80 C

FAQ about the product error

1.Can not take photo record	check whether the TF card room is enough
2.When recording, will stop suddenly	check whether the card is with class 10 or above
3.When play back video or photo, file error	please format the TF card
4.Video is not clear	please check the cam len is clear
5.The video or image is very dark	please check the view adjust correct or not
6.There is the strip in the image or video	please check the frequency setting 50/60hz
7.Dash cam is dead	Please reboot it